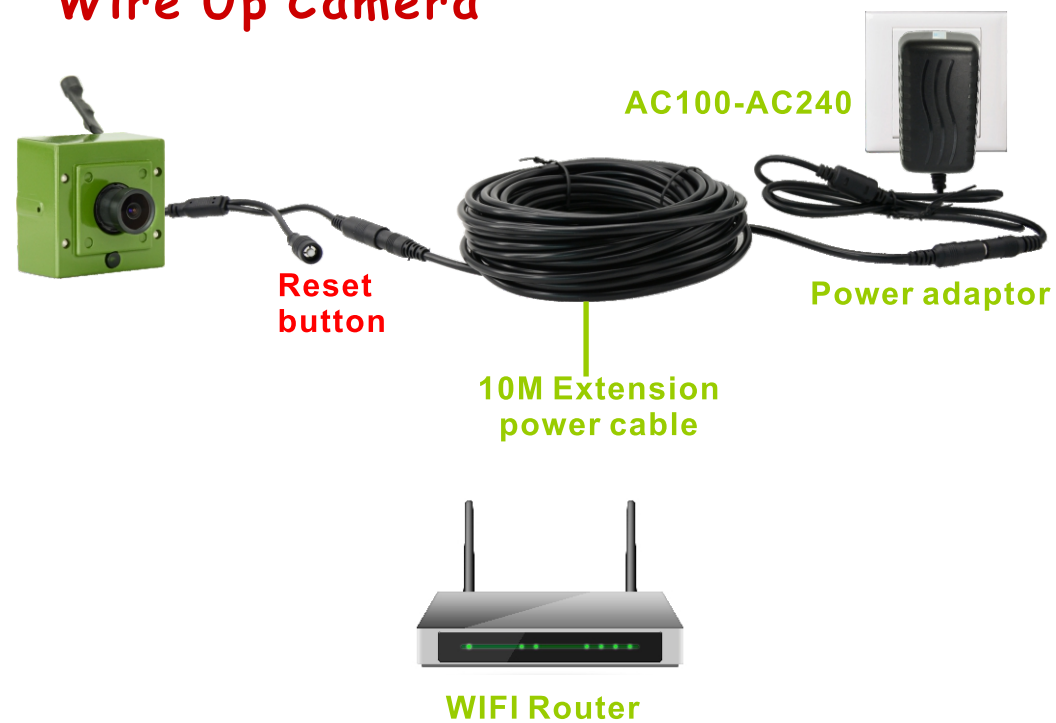
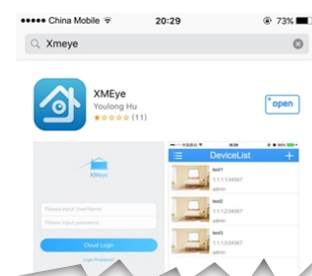


## Wire Up Camera



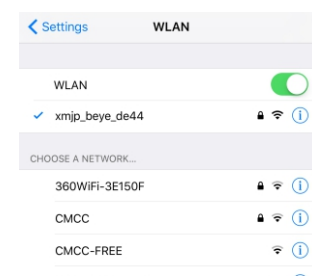
*NOTE: When use power bank (not included), the power bank should be closed to the camera without 10M extension cable.*

## Directly access the camera with smart phone



### Install App

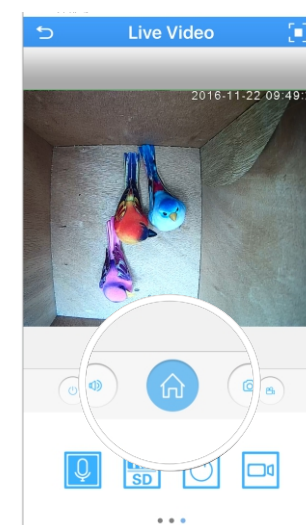
1. Search and install App 'XMEYE' to your smart phone.



### Connect Camera's wifi

2. The camera will generate a new wifi spot after it boots up. Enter WIFI setting of smart phone, Connect the wifi. The password is '1234567890'

*NOTE: If you don't see the spot long press the reset button for 10 seconds, wait for another 2 minutes to search the WIFI spot*



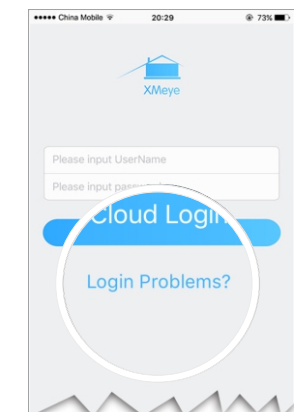
### Live Video

3. Click 'Direct login' at the right bottom. Click the camera in the DeviceList to watch the live. Click. Home icon you can playback the footage on Marco SD card.

## Connect camera to network

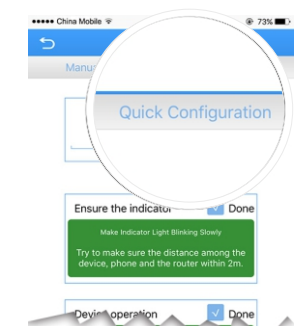
1. Press the reset button at the end of cable 3 time continuously to turn the camera from directly accessing to network mode.

*NOTE: You will be un-able to directly access the camera after you change to network mode successfully. You also can check the WIFI spot on your smart phone which should be disappeared. otherwise, press 3 time again.*

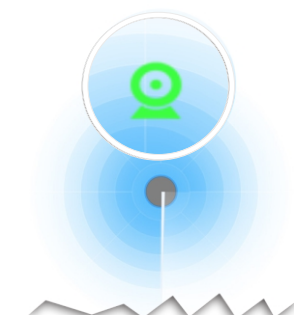
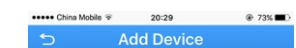


### Cloud Login

3. Click 'Login Problems' to create account. Key in account information, click 'Cloud Login'

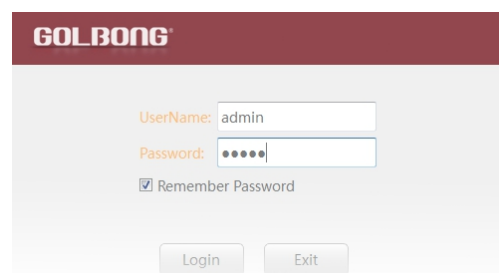


2. Click '+' icon on top-right, Press "Quick Configuration" next to "Manual Add", fill in the password of your WIFI router (Not Camera's). Check the two option anyway, Click the last button.



4. The radar start scanning on the screen. once a green icon appear in the radar, click the icon to add the camera.

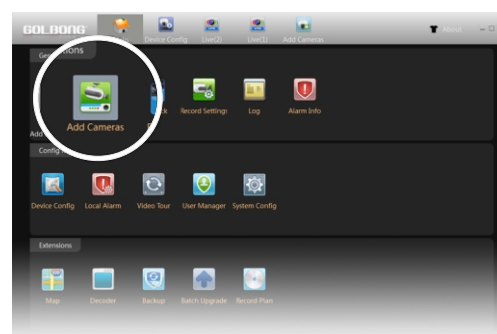
## Connecting with PC software



### Installing PC Software

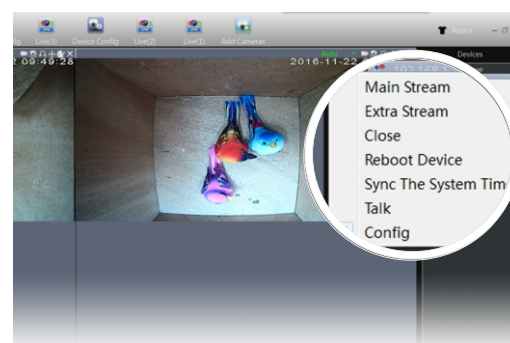
1. Download Windows CMS5 PC software using below link.  
[goo.gl/QTskqP](http://goo.gl/QTskqP)

Follow each step to install the software. Click CMS5 icon on the desktop to login the main console



### Add the Camera

2. Click 'Add camera', you camera will be automatically discovered and show on the list. Select the camera and Click 'Add' button at the middle.



### Live View

3. Return to main console, Double click camera in the list to watch the live.

*NOTE: Right click camera name in live page, select 'Config' you can access camera setting.*



### Recording to PC

4. Return to main console, click 'record plan', you can turn your PC as recorder

## Need More Help

<http://www.golbong.com/support.asp>  
[support@golbong.com](mailto:support@golbong.com)